

## Recyclable Household Hazardous Waste

*No Appointment Required*



### Quantity Limits

Antifreeze	10 gallons
Household batteries	25 pounds
Auto batteries	10
Used motor oil (in containers no larger than 5 gallons)	20 gallons
Used oil filters	10
Latex paint	10 gallons
Fluorescent lamps	30
Mercury containing items	10
Electronic waste (call in advance if quantity exceeds 10 units)	No limit



### Tuolumne County's Recyclable Household Hazardous Waste Collection Facilities

Cal Sierra Transfer Station/WM  
19309 Industrial Dr.  
Sonora, CA  
(209) 536-1719

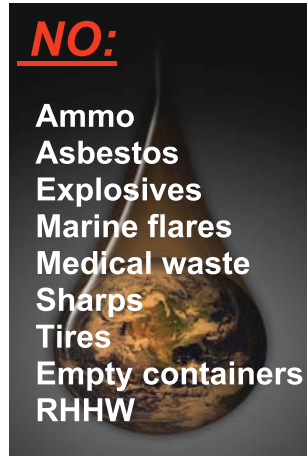


Groveland Transfer Station  
10700 Merrell Rd.  
Groveland, CA  
(209) 962-7224

## Non-Recyclable Household Hazardous Waste

*Appointment Required*

Oil-based paint  
Aerosol cans  
Thinners  
Polishes  
Waxes  
Glues  
Solvents  
Pesticides  
Herbicides  
Art supplies



Rust preventatives  
Wood preservatives  
Photo chemicals  
Oven/drain cleaners  
Household cleaners  
Mothballs  
Nail polish remover  
Pool & spa chemicals  
Gasoline & contaminated oil  
Brake fluid  
Engine/brake part cleaners

**Facility is open 1 day per month  
For an appointment call:**

Tuolumne County Solid Waste Division  
533-5588



## Transport Your Household Hazardous Waste Safely:

1. Keep materials in original containers with labels intact
2. Do not mix materials
3. Pack items in tubs or boxes with newspaper or kitty litter to contain possible spills
4. Put waste in trunk or bed of truck
5. Remain in the vehicle when you arrive at the collection site. Staff will remove the waste from the vehicle

### Remember:

- No containers larger than 5 gals.
- Limit of 15 gals. & 125 lbs. all other HHW per trip (California state law)

### Small Business Hazardous Waste Disposal

For qualification and appointment call:

Tuolumne County Solid Waste Division  
533-5588

[www.tuolumnecounty.ca.gov](http://www.tuolumnecounty.ca.gov)

# Used Oil & Oil Filters

Locations accepting used motor oil and oil filters\*

## Certified Centers

pay for up to 5 gallons of used oil

Auto Zone \*  
Big O Tires \*  
Cal Sierra Recycling/WM \*  
Jim's Automotive Service \*  
O'Reilly Auto Parts \$\$\*  
Sonora Express Lube \* (Pesce Way)  
Sonora Express Lube \* (Mono Way)  
Twain Harte Gas \*  
Zak's Auto Shack  
\$\$ offers coupon instead of cash



## Other Collection Centers

no payment for used oil

Cal Sierra Transfer Station/WM\*  
Columbia Airport\*  
Groveland Transfer Station\*  
Moccasin Recreation Area\*  
Pine Mountain Lake\*  
Pinecrest Transfer Station  
Wal-Mart Tire & Lube Express

Contaminated motor oil accepted at the Household Hazardous Waste Facility

Call 533-5588 for more information

# Product Stewardship

Product Stewardship is the idea that manufacturers and retailers take responsibility for the products they make and sell once they become waste. This will reduce the financial burden to local government for managing these wastes.

## What You Can Do:

- Ask your local retailer to consider taking back used batteries, fluorescent lights, electronic waste and left over paint.
- Visit the California Product Stewardship Council website at [www.calpsc.org](http://www.calpsc.org)

For more information about recycling and managing household hazardous waste call:



**Tuolumne County  
Solid Waste Division**

(209) 533-5588

or go to

[www.tuolumnecounty.ca.gov](http://www.tuolumnecounty.ca.gov)

Printed on recycled content paper



# How to Manage

A stylized purple house icon with a chimney and windows, set against a white background with a dotted pattern at the bottom.

## Household Hazardous Waste

in  
**Tuolumne  
County**